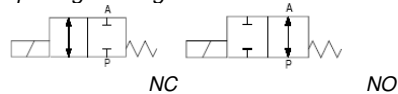


Media: air – water – oil - vacuum
 Pressure range: 0 to 40 bar max
 Media temperature: -20 ° to +130 °C
 Ambient temperature: -30 ° to +60 °C
 Media viscosity: 500 centistokes max
 Mounting: any position
 Opening Closing time: 25 – 130mSec



2/2 Brass

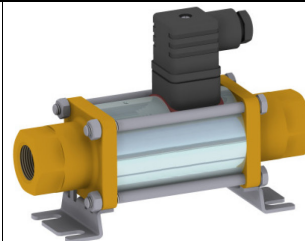
1/4 – 2" COAXIAL

N/CLOSED & N/OPEN

2 WAY DIRECT ACTING

0 - 40 Bar

TYPE 270



PRESSURE

Port BSP	Ø Orifice (mm)	Flow Kv L/min	Pressure Rating (bar) ΔP		Body Material	Part Number	
			Min	Max			
				A→P			P→A
1/4, 3/8, 1/2, (3/4*)	10	51	0	16	40	Brass	27010MG + port + voltage
3/8, 1/2, 3/4, (1*)	15	91	0	16	40	Brass	27015MG + port + voltage
1/2, 3/4, 1, (1 1/4*)	20	145	0	16	40	Brass	27020MG + port + voltage
3/4, 1, 1 1/4, (1 1/2*)	25	205	0	16	40	Brass	27025MG + port + voltage
1, 1 1/4, 1 1/2, (2*)	32	333	0	16	40	Brass	27032MG + port + voltage
1 1/2	40	637	0	16	16	Brass	27040MG112 + voltage
2	50	787	0	16	16	Brass	27050MG2 + voltage

OPTIONS

Normally Open version
 PTFE, NBR or EPDM Seals
 Fastening Brackets (Steel Zinc plated)
 Electrical Position Switch E1 with 1 position Open or Closed (Please advise if require position Open or Position Closed Switch)
 Electrical Position Switch E2 with 2 positions Open and Closed
 *Special options – Vacuum – Degreased – Flanged – Stainless Steel – Manual Override – Galvanised or Nickel Plated Steel Body

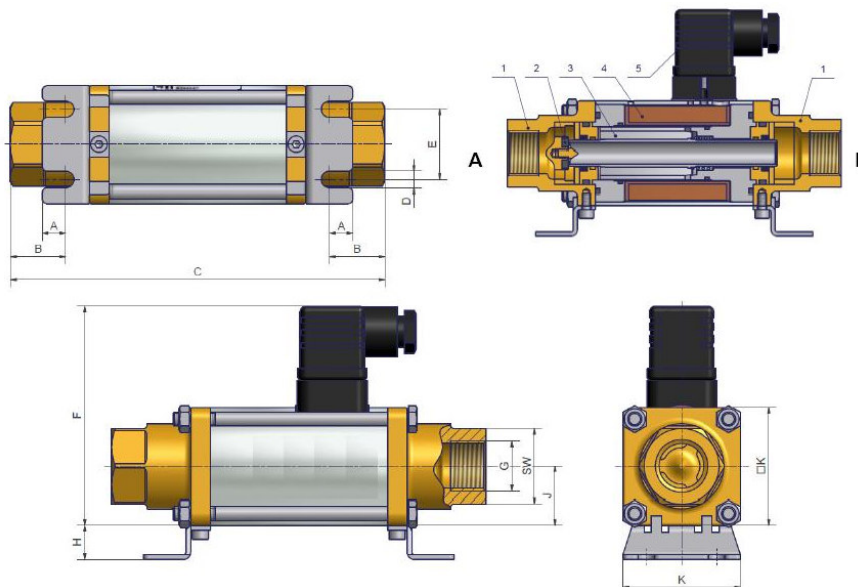
ELECTRICAL DATA

Voltage (-10% + 10%) Continuous duty 100%	Power Consumption (Watts)							Insulation class	Enclosure	Electrical connections
	Ø 10	Ø 15	Ø 20	Ø 25	Ø 32	Ø 40	Ø 50			
~ 12 - 24 - 48 - 110 - 230 (40 – 60Hz Connector with rectifier)	35	40	45	60	73	73	73	F 155 °C	IP 65 with connector	3 spades DIN 43650 DIN 40050 VDE 0110
= 12 - 24 - 48 - 110 - 230 (DC)	41	45	53	68	76	91	91			

CONSTRUCTION

Body: Brass MS058 (MG version): Option: St steel 303 (V2G) or 316L (V4G)
 Tube and internal parts: Stainless steel
 Seals: Static FKM - Dynamic PTFE (Optional NBR, EPDM or PTFE)

OVERALL DIMENSIONS



DN	G	SW	A	B	C	D	E	F	H	J	K	Kg
10	1/4 3/8 1/2 (3/4*)	32	10	23.5	159	7	30	93.5	14.5	25	50	1.7
15	3/8 1/2 3/4 (1*)	41	10.5	23.5	184	7	45	113.5	17.5	35	70	3.6
20	1/2 3/4 1 (1 1/4*)	46	15.3	33.5	215	7	50	123.5	17	40	80	5.4
25	3/4 1 1 1/4 (1 1/2*)	55	16	34	246	8.5	60	133.5	26	45	90	7.1
32	1 1 1/4 1 1/2 (2*)	60	6	37	269	6.5	78	156	4	57.5	115	12.6
40	1 1/2	75	6	40	304	6.5	98	173	4	65	130	18.3
50	2	75	6	40	304	6.5	98	173	4	65	130	18.3